The background of the advertisement is a close-up, artistic photograph of a car's engine components, specifically a turbocharger and a drive shaft. The lighting is dramatic, with deep reds and purples, creating a sense of power and speed. The text is overlaid on this image in a clean, white, sans-serif font.

A 227-bhp,
turbocharged,
5-speed,
all-wheel drive,
all-out
rejection
of cul-de-sac
cruisers.



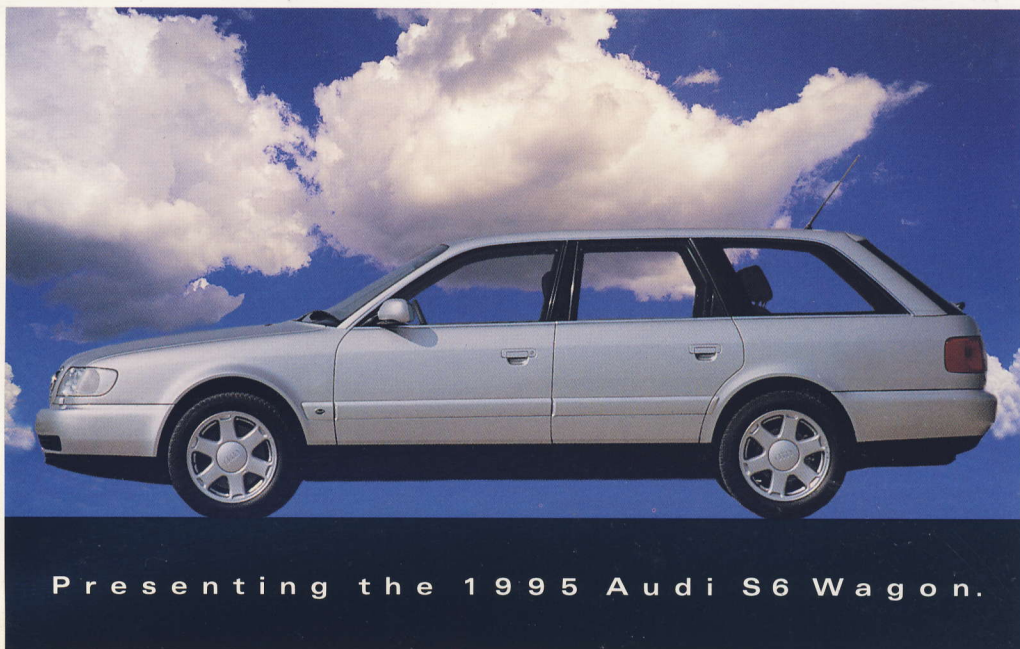


Meet the newest Beast of the Boulevard:

The 1995 Audi S6 Wagon. Its flared wheel wells, twin exhaust pipes that look big enough to swallow an old MG and low-profile tires merely hint at this



car's extraordinary performance. Sports-car quick with a 0-60 mph time of 6.6 seconds, the S6 Wagon attacks the



Presenting the 1995 Audi S6 Wagon.

standing 1/4 mile in 15.1 seconds. And places others in its class – the BMW 530i Touring, the Mercedes E320, even the

Volvo 850 Sportwagon

Turbo – clearly in its

rearview mirror.

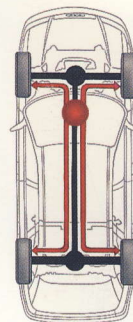




Speed, of course, is only one element of the equation.

Quattro®, Audi's exclusive full-time, all-wheel drive system, is key to maintaining the S6's spot

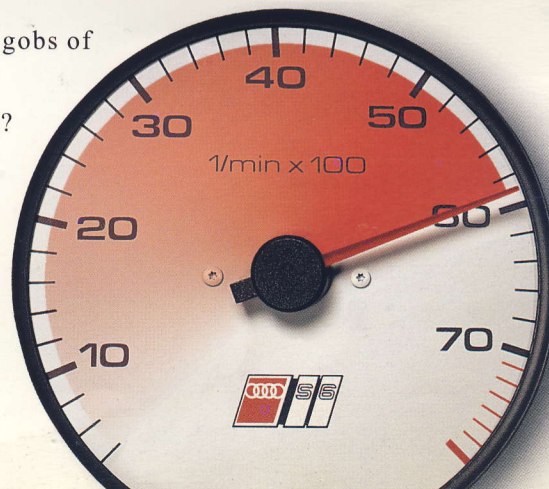
at the top of the station wagon/sport utility vehicle food chain. Instantly transferring power to the wheels with the most traction, quattro allows you to carve corners with confidence.

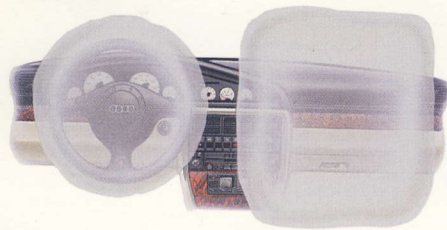
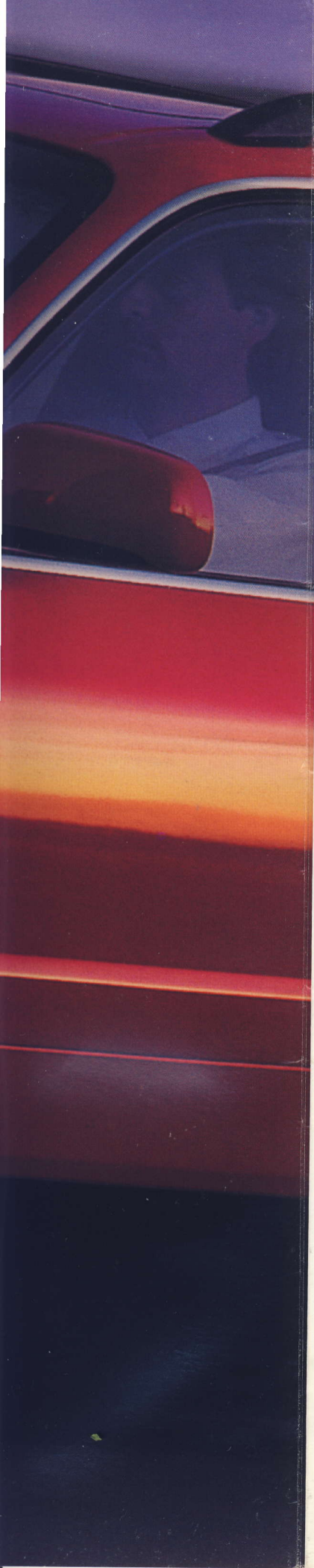


Under conditions that send lesser vehicles scurrying back to the comfort of



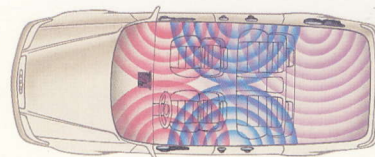
their garages. Thanks to its race-bred intercooler and sophisticated electronic boost control, the power's there when you need it. Bye-bye, turbo lag; hello, open road. Torque? Gobs and gobs of it. Even at low revs. Handling? How does glued to the road sound to you?



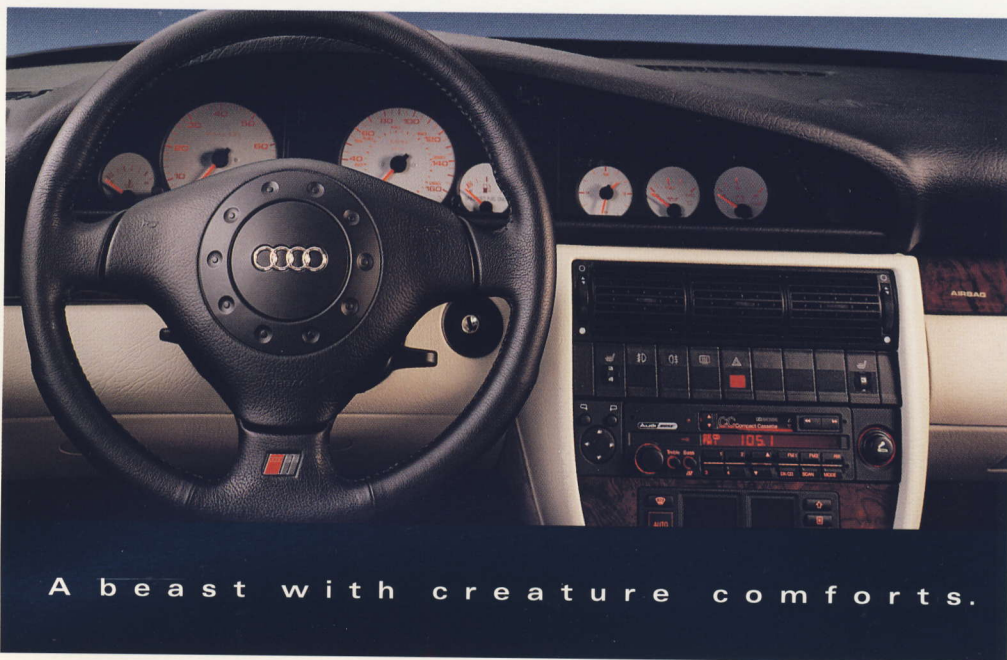


Creating a car this capable comes with a responsibility to keep driver and occupants safe with an array of active and passive safety systems. Quattro, a dual airbag supplemental restraint system, side-impact beams and ABS brakes

head a lengthy list. Equally comprehensive is the list of creature comforts: a premium

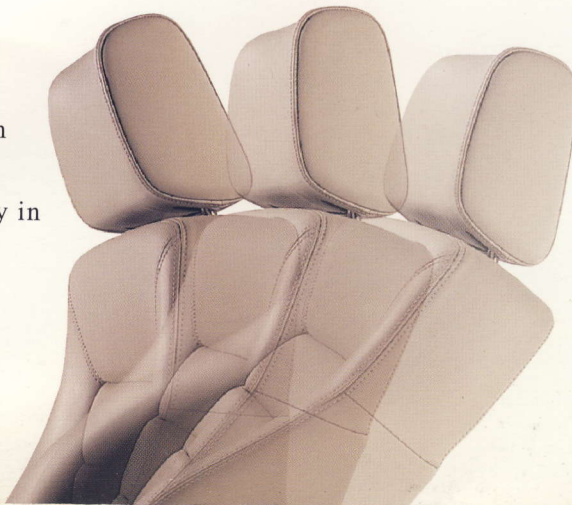


Let the sub-woofer handle the bass, while you handle the road.



A b e a s t w i t h c r e a t u r e c o m f o r t s .

Bose® music system, Nappa leather sport seats (heated front and rear), tilt and slide sunroof, automatic climate control and a cellular phone featuring hands-free operation and voice recognition. (A super idea in an ordinary car, close to a necessity in this extraordinary one.)

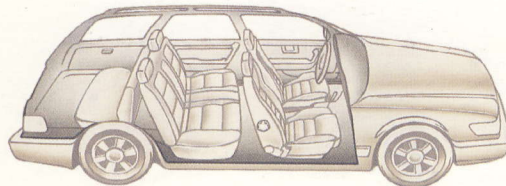


Blindingly fast, sure. The S6 Wagon is also breathtakingly spacious. It'll not only suck the doors off sports cars, you've got the room

to carry them, too. Along with pets, kids, golf clubs,



skis, groceries and antiques. With the rear bench down, this hauler swallows



65.5 cu. ft. of whatever it is you're

hauling. With the rear seat up, its

capacity is still 33.9 cu.ft. This car not only carries the day, it'll carry just about



A w o l f i n p a c k m u l e ' s c l o t h i n g .

everything else, too. Including a pair of kids in its nifty third seat. And while

you can drive this car hard, taking care of it is quite easy. Thanks to the Audi

Advantage[®], all scheduled maintenance—even tune-ups and wheel alignments—

is no-charge for the first three years

or 50,000 miles. This wolf is

surprisingly easy to care for.



*See your authorized Audi dealer for details.



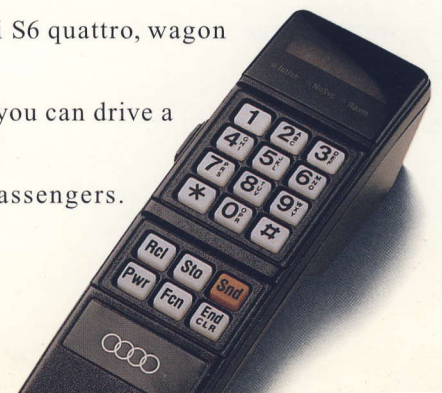
Audi has long known that wagons aren't for everyone. Hence, the phenomenal

1995 Audi S6 Sedan. This 5-speed, 4-door marvel is .4 seconds quicker to 60 miles per hour than the wagon and every bit as comfortable and capable.

Capable of carrying several pairs of skis in its cleverly executed ski sack. Or Saturday's foursome complete with clubs. Or that painting you simply had to take home. Anti-theft protection is standard, of course, and exceptionally



thorough thanks to the ingenious infrared remote door lock system found on your ignition key. The key will also activate your precise seating and mirror positions. (The fact is, there aren't many options to choose from on this remarkably complete car.) The 1995 Audi S6 quattro, wagon or sedan – all the proof you'll ever need that you can drive a car that takes no prisoners and still takes passengers.



Technical specifications: 1995 S6 Wagon

Engine

Type: 2.2 liter, 20-valve, turbocharged, 5-cylinder, in-line, Bosch® Motronic®¹electronic fully adaptive sequential fuel injection/ignition system, permanent fault memory, dual knock sensors, cylinder selective knock control, electronic turbo-boost control
Bore: 3.19 in. (81.0 mm) Stroke: 3.40 in. (86.4 mm)
Displacement: 2.2 litres (136 cu.in.) Compression ratio: 9.3:1
Horsepower (SAE net): 227 hp @ 5900 rpm
Torque: 258 lbs.ft. @ 1950 rpm
Fuel requirement: Unleaded premium (91 octane) Unleaded super premium (94 octane) recommended for maximum performance

Drivetrain

Type: quattro®— permanently engaged all-wheel drive
Transmission: Five-speed manual

Body/chassis

Construction: Unitized construction, fully galvanized steel (both sides), multi-step anti-corrosion protection

Suspension

Front: Coil spring/shock absorber (gas charged) struts, lower control arms, stabilizer bar
Rear: Independent, trapezoidal lower control arms, coil spring/shock absorber (gas charged) struts

Wheels/tires

Wheels: 7.5J x 16, Cast aluminum alloy, six-spoke AVUS-style 7.5J x 15, Cast aluminum alloy, six-spoke (optional, with all-season tires)
Tires: 225/50 ZR 16, performance radials
215/60 VR 15, all-season (optional)

Brakes

Service brakes: Anti-lock brake system (ABS), hydraulic power assist, dual braking circuits split front to rear, load and lateral acceleration sensitive brake pressure proportioning
Front: Ventilated disc, dual piston caliper, 10.9 in. (276 mm) diameter
Rear: Ventilated disc, 10.6 in. (269 mm) diameter

Steering

Type: Rack and pinion, vehicle speed variable power assist
Turning circle: 34.4 ft. (10.5 m)

Capacities

Engine oil: 4.7 quarts/4.5 liters (w/filter) Fuel tank: 21.1 gal.(80 liters)

Performance

0-60 mph (0-100 km/h): 6.6 sec.
Top track speed: 145 mph (235 km/h)²

Fuel economy: EPA estimate

18 mpg city (13 liters per 100 kilometers)
23 mpg highway (10 liters per 100 kilometers)

Exterior dimensions

Wheelbase: 106.0 in. (2692 mm)
Track: front/rear: 61.5 in. (1563 mm)/60.1 in. (1528 mm)
Overall length: 192.6 in. (4892 mm)
Overall width: 71.0 in (1804 mm)
Height (unladen): 59 in. (1496 mm) (includes roof railing)
Ground clearance (laden): 4.0 in. (102 mm)
Curb weight: 3924 lbs. (1780 kg)

Interior dimensions

Seating capacity: 7 (folding 2-place seating for children in the rear)
Trunk volume: 33.9 cu.ft. (65.5 cu.ft. with seats folded)

Options

The 1995 S6 offers a lengthy list of amenities as standard equipment. The only options are: Pearlescent Metallic Paint, and All-Season 215/60 VR tires on six-spoke alloy wheels. See your dealer or 1995 Audi full-line brochure for complete details.

¹ Motronic® is a registered trademark of Robert Bosch GmbH.

² Maximum speed electronically limited to 130 mph in U.S. Obey all traffic laws.

Exterior colors

Tornado Red



Brilliant Black W/Clearcoat



Crystal Silver Metallic



Emerald Metallic



Europa Blue Metallic



Cashmere Gray Metallic



Pearl White Pearlescent



Interior colors

Anthracite, Ecu

Anthracite, Ecu, Platinum

Anthracite, Platinum

Anthracite, Ecu

Anthracite, Ecu, Platinum

Anthracite

Anthracite, Ecu

Note: A word about this brochure. Audi of America, Inc. believes the specifications in this brochure to be correct at the time of printing. However, specifications, standard equipment, options and colors are subject to change without notice. Some equipment may be unavailable when your car is built. Please ask your dealer for advice concerning current availability of standard and optional equipment and verify that your car will include the equipment you ordered. Tires supplied by various manufacturers. Some vehicles shown with options. Audi, quattro, S6 and the four rings and Audi emblems are registered trademarks of Audi AG.

Bose® is a registered trademark of the Bose Corporation. ©1995 Audi of America, Inc.

W74-995-1009 Printed in U.S.A.

Technical specifications: 1995 S6 Sedan

Engine

Type: 2.2 liter, 20-valve, turbocharged, 5-cylinder, in-line, Bosch® Motronic®¹electronic fully adaptive sequential fuel injection/ignition system, permanent fault memory, dual knock sensors, cylinder selective knock control, electronic turbo-boost control
Bore: 3.19 in. (81.0 mm) Stroke: 3.40 in. (86.4 mm)
Displacement: 2.2 litres (136 cu.in.) Compression ratio: 9.3:1
Horsepower (SAE net): 227 hp @ 5900 rpm
Torque: 258 lbs.ft. @ 1950 rpm
Fuel requirement: Unleaded premium (91 octane) Unleaded super premium (94 octane) recommended for maximum performance

Drivetrain

Type: quattro®— permanently engaged all-wheel drive
Transmission: Five-speed manual

Body/chassis

Construction: Unitized construction, fully galvanized steel (both sides), multi-step anti-corrosion protection

Suspension

Front: Coil spring/shock absorber (gas charged) struts, lower control arms, stabilizer bar
Rear: Independent, trapezoidal lower control arms, coil spring/shock absorber (gas charged) struts

Wheels/tires

Wheels: 7.5J x 16, Cast aluminum alloy, six-spoke AVUS-style 7.5J x 15, Cast aluminum alloy, six-spoke (optional, with all-season tires)
Tires: 225/50 ZR 16, performance radials
215/60 VR 15, all-season (optional)

Brakes

Service brakes: Anti-lock brake system (ABS), hydraulic power assist, dual braking circuits split front to rear, load and lateral acceleration sensitive brake pressure proportioning
Front: Ventilated disc, dual piston caliper, 10.9 in. (276 mm) diameter
Rear: Ventilated disc, 10.6 in. (269 mm) diameter

Steering

Type: Rack and pinion, vehicle speed variable power assist
Turning circle: 34.4 ft. (10.5 m)

Capacities

Engine oil: 4.7 quarts/4.5 liters (w/filter) Fuel tank: 21.1 gal.(80 liters)

Performance

0-60 mph (0-100 km/h): 6.2 sec.
Top track speed: 150 mph (241 km/h)²

Fuel economy: EPA estimate

18 mpg city (13 liters per 100 kilometers)
23 mpg highway (10 liters per 100 kilometers)

Exterior dimensions

Wheelbase: 106.0 in. (2692 mm)
Track: front/rear: 61.5 in. (1563 mm)/60.1 in. (1528 mm)
Overall length: 192.6 in. (4892 mm)
Overall width: 71.0 in (1804 mm)
Height (unladen): 56.5 in. (1449 mm)
Ground clearance (laden): 4.0 in. (102 mm)
Curb weight: 3814 lbs. (1730 kg)

Interior dimensions

Seating capacity: 5
Trunk volume: 16.4 cu.ft.