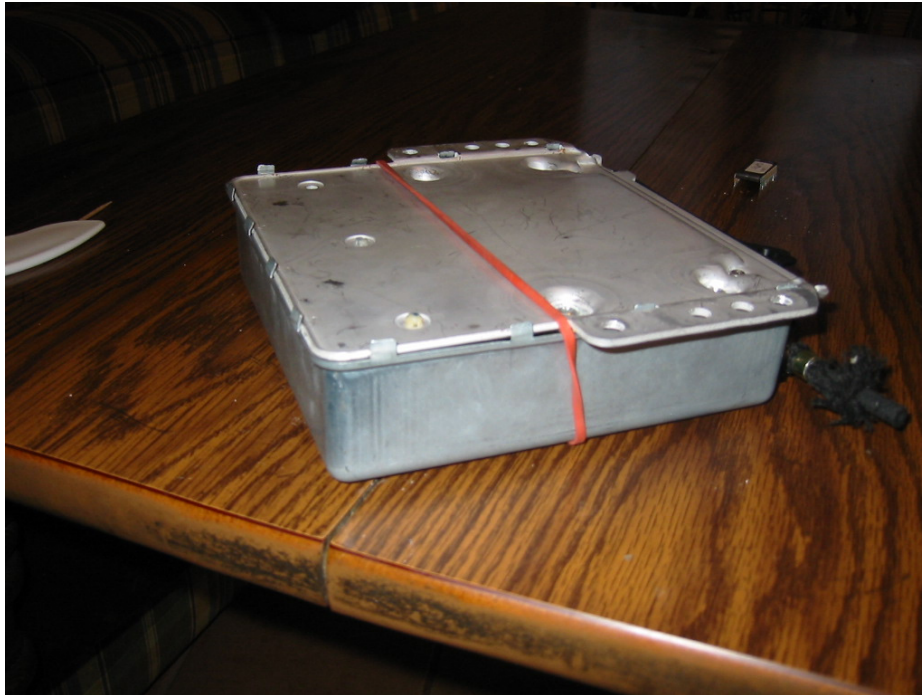


Bob Myers ECU Opening Instructions

http://chips-ur-s.com/ECU/ECU_Pics.html

A few pictures showing some of the stages of opening the Audi AAN ECU.

Photos (except for one indicated below) © Robert Myers, 2005



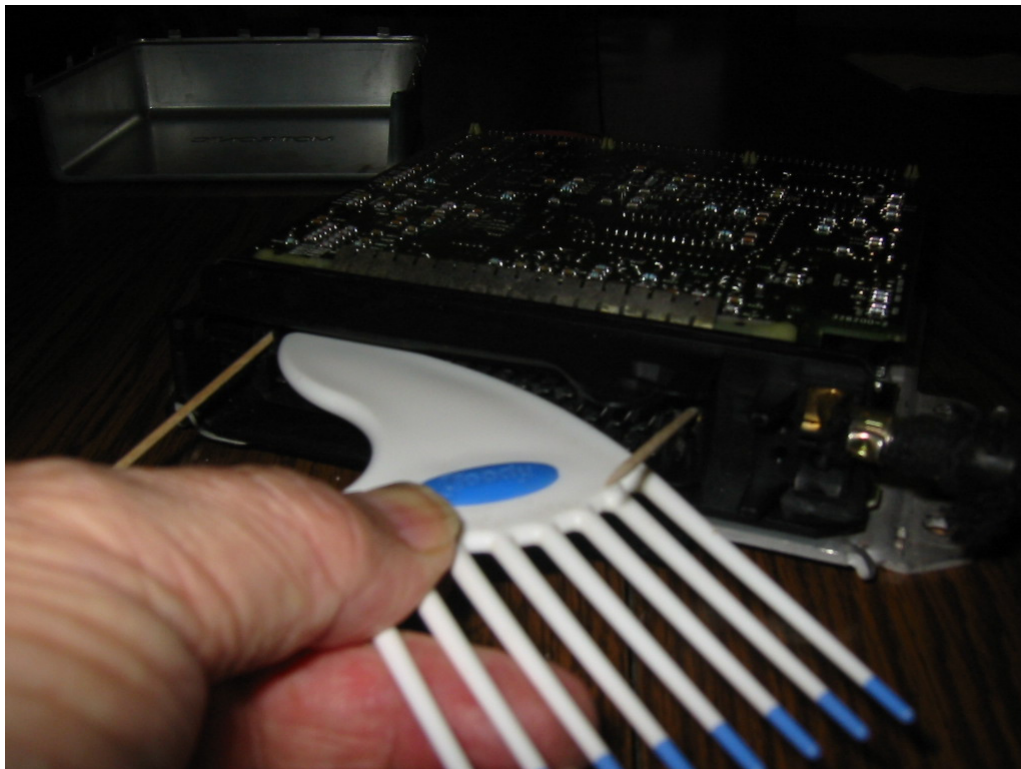
The tabs on the bottom side of the ECU need to be bent open as the ones here are. The rubber band is just incidental.



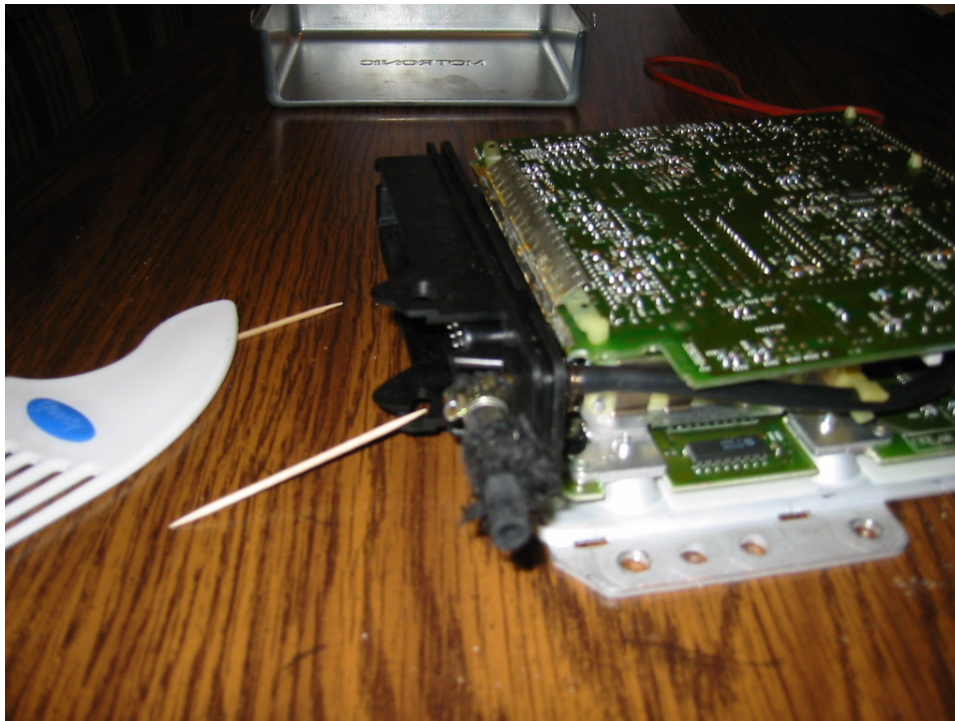
A view of the connector end of the ECU.



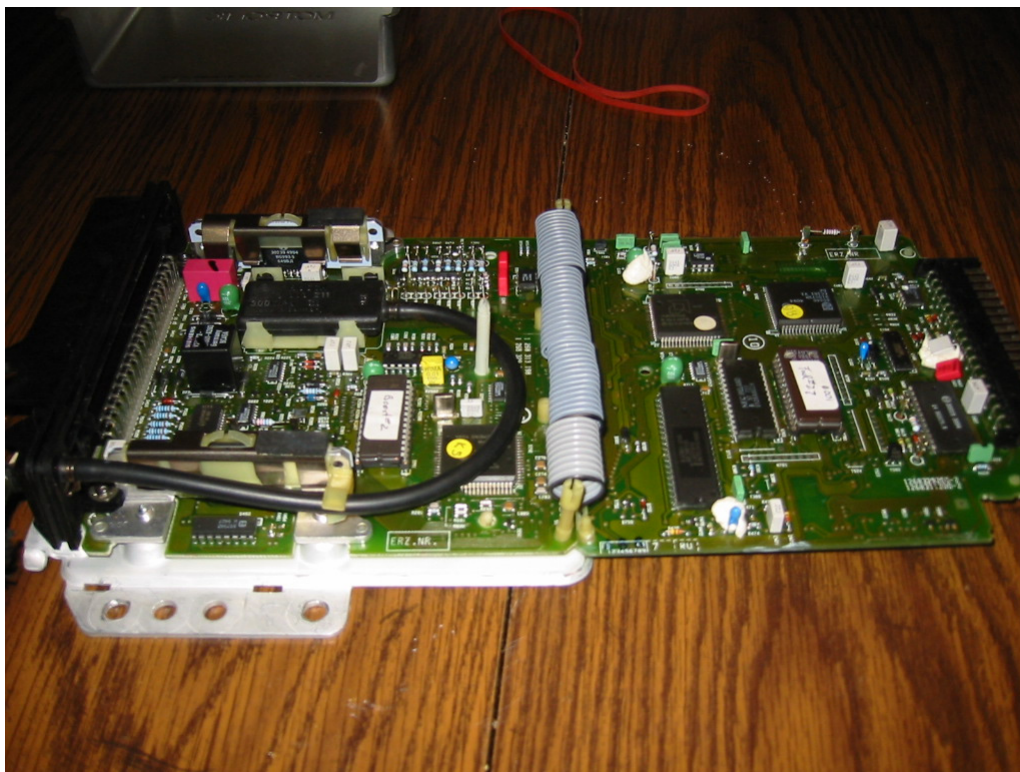
Toothpicks inserted into the plastic clips.



The case has been separated and the clips propped open and some leverage is used to press down on the top row of connector pins. My "lever" is a plastic hair pick we use to groom our dogs.



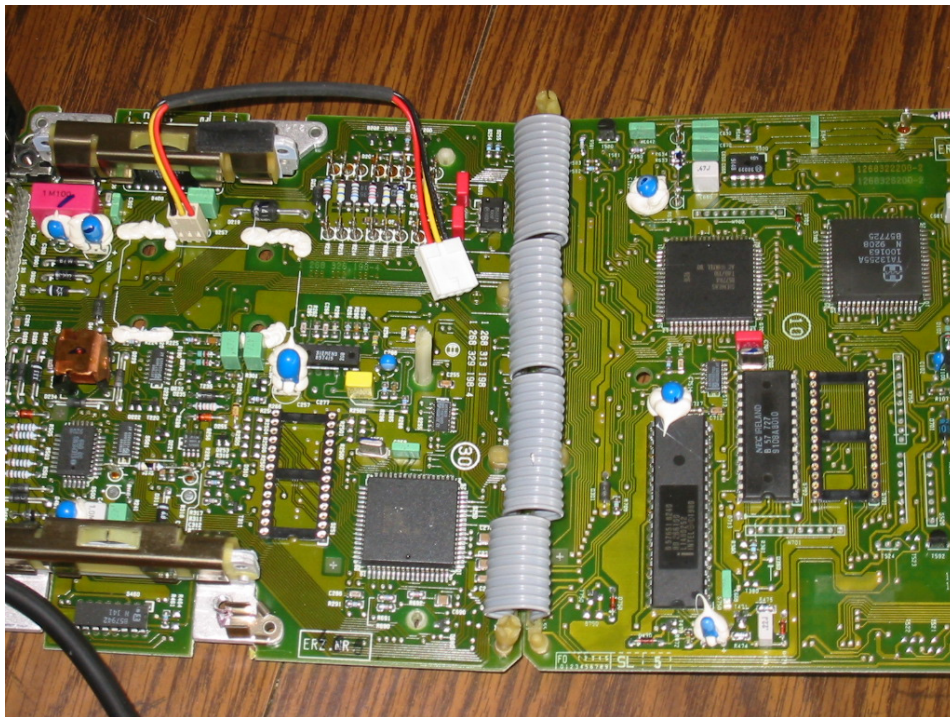
The top board is now popped loose from the connector and is ready to unfold.



The ECU is now opened up. Note the OEM PT with the hose attached and the two OEM EPROMs with grayish labels on them. The one "inside" the loop of hose is the boost chip. The one in the other board is the fuel/timing chip. Also note that the notched ends of these chips are the ends closer to the camera.

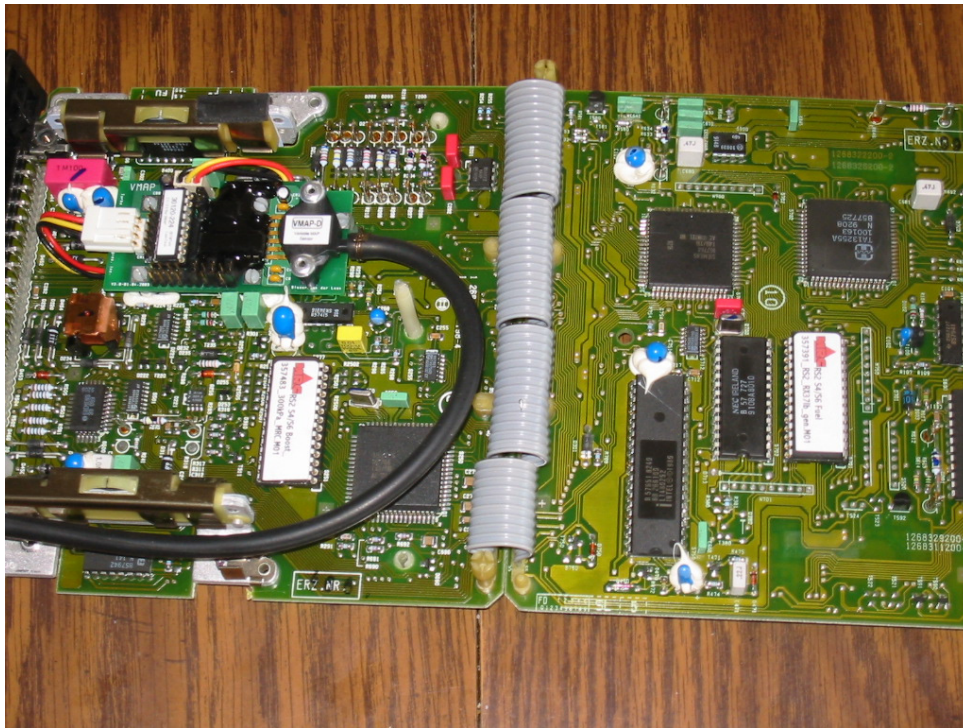


The VMAP.



Note that here the PT and the two OEM chips have been removed and the VMAP cable and two chip

sockets have been installed. Observe that the cable connection to the board is "black to black". The black wire is closest to the black connector.



The ECU is now ready to close up. The chips are in their sockets and the VMAP is installed. Note the routing of the cable underneath the VMAP. Also note the locations of the color coded wires of the cable. The black wire is closest to the camera. The locations are indicated on the VMAP daughterboard in rather small print.



A sample photo of a scrambler chip. The scrambler is the tiny chip in the middle of the socket. I did not take this photo but found it on the web somewhere and captured it. I have forgotten where. My apologies for not giving proper credit.

Note: If you are replacing chips from another source you may have such a scrambler chip in your ECU. If you do, it is imperative that the scrambler be removed as part of the installation process.

Here are several pictures of a typical scrambler installation. The scrambler is part of the small daughterboard under the right hand-labeled chip.



